

# MIL-C2



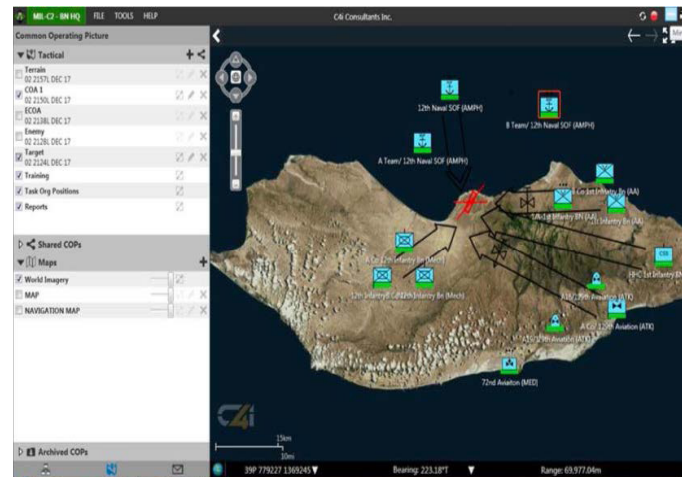
## Supporting Command and Control Operations

MIL-C2 is a Situation Awareness tool designed to support Command & Control operations of medium sized military forces. MIL-C2 allows commanders to create plans and orders that include geo-referenced locations illustrating key actions or objectives.

An intuitive user interface with automated position updates from digital, GPS-enabled radios allow commanders to quickly and easily share the Operational picture to help make informed and effective decisions.

### Key Capabilities

- ◆ **Digital Mapping & Terrain**  
MIL-C2 provides an easy way to use satellite or bespoke custom maps to ensure that the mission picture matches what the troops see in theatre.
- ◆ **Situational Awareness**  
MIL-C2 interfaces with both military and commercial grade GPS enabled radios to provide up to date position reporting for all GPS enabled entities. Simple geo-located reports such as SPOT or CONTACT can be quickly conveyed to commanders.
- ◆ **Command and Control**  
MIL-C2 allows commanders to create plans and orders that include geo-referenced locations illustrating key actions or objectives. Full support for MIL-STD 2525C symbology & graphics.



# Why Choose MIL-C2?

MIL-C2 is built on a highly scalable architecture allowing for deployments from dismounted smart devices to In-vehicle tactical Tablet/Laptop and to HQ/Command Post environments.

MIL-C2 allows external systems to be easily integrated for information sharing. The system supports multiple deployment models including Client Server, P2P and Ad-Hoc, and is fully network agnostic.

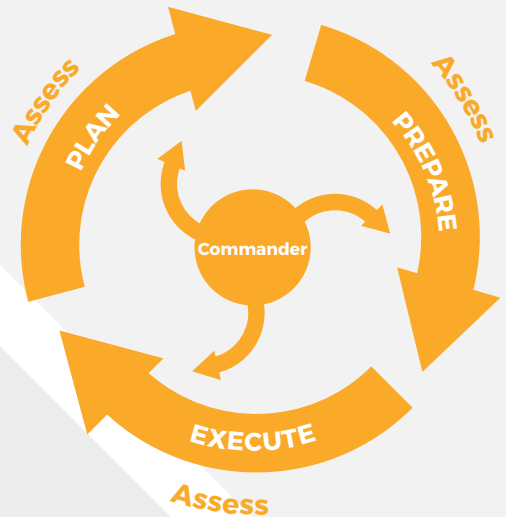
## Simple User Interface

Information is easily filtered by Layer or sub layer, allowing users to adjust the Situational Awareness picture to display pertinent information to improve efficiencies in the military decision-making process.

Provides for built-in role specific templates for common military staff functions.

## Key Features

- Blue Force Tracking
- GEO referenced Reporting
- Tactical Radio Integration
- XMPP Chat Server
- ORBAT Database Support
- NFFI Gateway
- Local or In-Vehicle Sensor Ingest and Display
- MILSTD 2525C symbology & graphic overlay drawing tools
- Common Operating Picture supporting 'Live' sharable layers allowing the Command Post and higher to view data from Forward Theatre local sensors & GPS.



Commanders at various levels can easily build and share the operational picture of own forces, enemy Course Of Action and planned operations.

Based on COTS hardware, provides a common look and feel across all deployments.



Suite 119, 2723 37th Ave N.E. Calgary, AB, T1Y 5R8 Canada

+1 403.241.3264

info@c4itrstech.com

c4itrstech.com