

# FAST

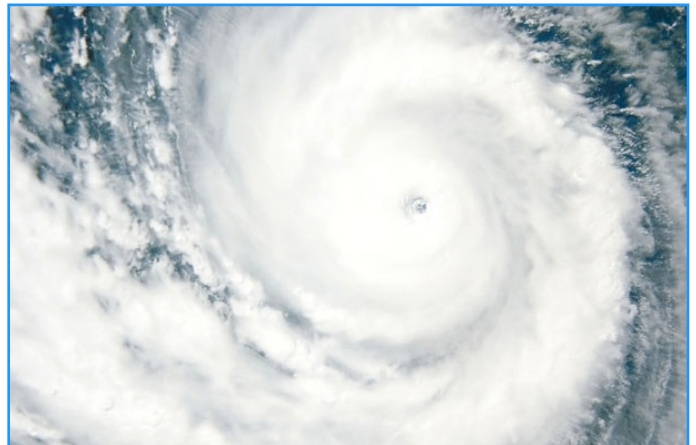
## Flood Awareness Software Tool

Planning an emergency response and mitigation plan for flooding requires awareness of those areas that are historically vulnerable.

The Flood Awareness Software Tool allows you to quickly analyze flood zones based on topography and volume of rainfall over a selected time period. Easily recognize evacuation routes, mitigation strategies, and interface with critical infrastructure to predict and monitor flooding in your defined area of operations.

### Primary Uses

- ◆ **Identify Key Flood Zones**  
Uses accurate GIS data to produce visual heat maps.
- ◆ **Forecast Flood Risks**  
Historical/Dynamic precipitation data that can be modified live.
- ◆ **Timeline Based Flood Mitigation**  
Visually understand water levels using an interactive timeline.
- ◆ **Plan Evacuation Areas**  
Use the built in Evacuation Route tool to effectively react & respond.



# Why Choose FAST?

Trying to mitigate flood risks can be challenging, especially when you need to consider historical rainfall data and cities with different layouts.

The FAST tool is designed to help decision makers, planning officials and emergency disaster responders to prepare for and reduce the impacts of flooding.

It allows you to visualize and assess the risk for potential flood areas using a intuitive map & timeline by displaying the extent of the anticipated flooding

## Modelling Rainfall

FAST allows users to dynamically configure the amount of precipitation using an interactive timeline.

## Mapping Layers

Using modern day ESRI GIS, users are able to configure different types of mapping layers to overlay onto their city/environment.

## Advanced Evacuation Route Tool

As areas become flooded, the user is able to quickly try to find the best effective routes to get out of those situations

## Modify Pump Parameters

Dynamically change parameters in catchment areas or pumps on the map.

FAST differs from static public flood maps because it allows you to dynamically adjust flood parameters to effectively visualize and manage risk.



Suite 119, 2723 37th Ave N.E. Calgary, AB, T1Y 5R8 Canada

+1 403.241.3264

info@c4itrstech.com

c4itrstech.com